

# Equipment trade show

4<sup>th</sup> – 6<sup>th</sup> October 2023,

**Courtyard by Marriott Bucharest Floreasca Boulevard,  
Bulevardul Dimitrie Pompeiu 2 A, București 020337, Romania**

We are excited to bring you our latest smart solution and technologies at the trade show of the Conferences:

[From Science to guidance and Practice](#) – October, 5<sup>th</sup> – 6<sup>th</sup>

[More quality, less waste](#) - October, 4<sup>th</sup>

[Materials Characterization](#) – October, 4<sup>th</sup>

More than 50 equipment configurations can be seen and tested. At the booths you can meet the technical specialist from OF Systems and from equipment producers.

---

## [Mettler Toledo Multichannel Pipette Calibration Balance XPR105MCP](#)

### [Mettler Toledo Rainin Multichannel Pipette](#)



**RAININ**  
Pipetting 360°

The XPR105MCP is the high-speed solution for ISO 8655-compliant calibration of multichannel pipettes. It has a readability of 10 µg and supports multichannel pipettes with up to 12 channels and nominal volumes from 0.5 – 1000 µL.

Multichannel Pipettes, Consistent Sample Pickup across All Channels. A multichannel pipette is an enhanced version of the classic pipette, a handheld tool that dispenses precise amounts of liquids across multiple channels.



---

## [Mettler Toledo Rainin SmartCheck SLS1010S](#)



**RAININ**  
Pipetting 360°

Fast & Easy Pipette Verification. Verify the performance of any brand of pipette that dispenses 10 – 1,000 µL.

A pipette verification device saves time and money by verifying the performance of a pipette before working with precious samples or reagents. SmartCheck™ is the only benchtop pipette volume verification device capable of determining if a pipette is dispensing accurately in less than 60 seconds. Compact by design, SmartCheck reduces the risk of experimental failure.



---

## [Mettler Toledo Rainin Pipette Management](#)



**RAININ**  
Pipetting 360°

PipetteX™ asset management software for tracking and managing pipettes. Audits can be simple. By accessing every pipette's service history and documents in just a few clicks, you can save up to 80% of the time you used to spend preparing for an audit. With PipetteX, you are always audit-ready.

PipetteX™ automatically stores performance-check results, flags pipettes in the event of routine test failure and sends notifications if action is needed. It puts your pipettes on a calibration routine so you know you're always pipetting with high-performing instruments.



---

## Mettler Toledo Rainin SmartStand



### The World's First Intelligent Pipette Stand

The Rainin SmartStand is a pipette stand that helps you manage calibration and assures that pipettes in use are SOP-compliant. SmartStand automatically charges electronic pipettes, displays the calibration status of any Rainin XLS pipette you place on it and will charge Rainin E4 XLS electronic pipettes. When used in conjunction with PipetteX asset management software, SmartStand is a part of an integrated, easy-to-use pipette management system.

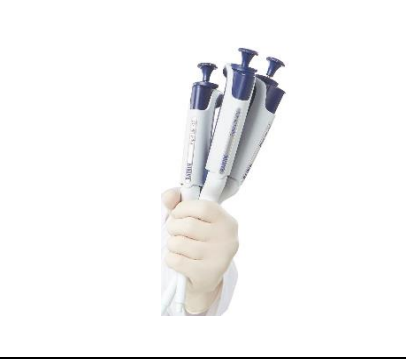


---

## Mettler Toledo Rainin Single Channel Pipettes



Mettler Toledo Rainin electronic and manual pipets, 1  $\mu$ L to 20 mL. A single channel pipette is a handheld mechanical instrument used in many life science laboratories. Single channel pipettes accurately transfer small to medium volumes of liquids through individual tips. Rainin single channel pipettes are highly accurate, extremely tough and come with autoclavable liquid ends.



---

## HAAKE™ Viscotester™ iQ Rheometers



Measure and analyze the rheological properties of a wide range of liquid, paste and semi-solid samples with the Thermo Scientific™ HAAKE™ Viscotester™ iQ and Viscotester iQ Air rheometers.



---

## Mettler Toledo Thermal Analysis System DSC 5+



### The New Standard.

MultiStar™ sensor with 136 thermocouples exceptional sensitivity for the measurement of weak effects.

Power compensation gives outstanding resolution for separation of close-lying effects.

Patented electrical heat flow adjustment saves time and provides superior accuracy.

Time-saving FlexCal™ adjustment – guarantees accurate results under all measurement conditions

Innovative robot with gas-purged sample chamber – protects samples from the environment and operates reliably around the clock

FlexMode™, choose power compensation or heat flux mode – for optimal DSC performance

Power compensation – provides outstanding resolution for separating close-lying effects



---

## Mettler Toledo Titrator Excellence T5 InMotion™ Autosamplers



The T5 Excellence titrator delivers full flexibility for both potentiometric and Karl Fischer applications. Expandable from 1 to 4 total burettes to grow with advanced needs. Supports InMotion automation for high throughput testing.

Automation in a laboratory today has high demands for a variety of samples and workflows. Automation is no longer just going from sample to sample for analysis. From eliminating process order and transcription errors of sample information to complex cleaning and environmental control and protection for analysis, our autosamplers are designed to assist in every way for flexible workflows and efficient analysis.



---

## SCHMIDT + HAENSCH VariPol, Modular Polarimeter for Pharma & more



VariPol is the newest and fastest generation of precision polarimetry. It is especially designed for pharmaceutical applications, but it can be adapted to further uses. Its unrivaled precision in measurement is paired with modularity, flexibility, and rapidity. State-of-the-art connectivity allows for seamless integration into your extended network of devices and permits monitoring your measuring results using Aquisys Software on phone or tablet.



---

## Sotax ATS Xtend™ UV On-/Offline Mettler Toledo UV7



Dissolution Testing USP 1/2/5/6. Get the best of both worlds. Online UV-Vis measuring and offline collection of samples with your dissolution tester. Different test methods are described in USP, Ph.Eur., and other internationally harmonized Pharmacopeia as well as in FDA guidelines.



---

## Sotax FT2 Friability Testing



Friability describes the mass reduction of a solid dosage form such as compressed, uncoated tablets occurring when subjected to mechanical strain during handling such as tumbling, vibration, or rubbing in a blister packaging. According to USP <1216> and Ph. Eur. 2.9.7, a maximum mean weight loss of not more than one percent (1%) is considered acceptable for most products.



---

## Sotax AT50 hardness tester



One for all your tablets. In the lab – or online with your press. The AT50 easily handles all your tablets. Designed for the demanding environments of pharmaceutical manufacturing and dusty compression rooms, the benchtop version excels with very short cycle times in your lab. Quickly test batches arriving from production or automate experimental testing in R&D. Innovative tablet alignment paired with robust Dr. Schleuniger® technology makes the AT50 an ideal instrument for both laboratory automation and online testing with your tablet press. Ensure comparability of results throughout IPC, QC and R&D.



---

## Sotax USP4 flow-through dissolution cells



The flow-through dissolution method offers complete flexibility on media volumes and allows repeatable positioning of virtually all dosage forms such as powders, APIs, lipophilic forms, suppositories, suspensions, liposomes, microspheres, semi-solids, implants, and medical devices including drug eluting stents. Described in the United States Pharmacopeia (USP) as Apparatus 4, in the European Pharmacopeia (EP) as Flow-through cell, in the Japanese Pharmacopeia (JP) as Apparatus 3, in the Chinese Pharmacopeia (ChP) as Method 6, and other Pharmacopeia, dissolution and drug release testing using a flow-through cell is proven to characterize the active drug release in terms of bioequivalence and in-vitro / in-vivo correlation (IVIVC) in clinical studies and daily QC routines alike.



---

## Binder VD 23 Vacuum drying chambers



Vacuum drying chambers for non-flammable solvents.  
Fast, gentle drying.  
Optimum heat transfer through large thermal conducting plates  
Safe work thanks to proven safety concept.  
Also option of modular complete system with vacuum pump and pump chamber.



---

## Binder Model KBF-S ECO 240 Constant climate chamber



Safe thanks to standard-compliant testing according to the ICH Q1A guideline, even with full load.  
Reliable thanks to failsafe operation without compromise.  
Smart, as a wide range of accessories makes it highly compatible for adaptation to specific customer requirements.  
Economical, as energy consumption is minimal thanks to optimized thermoelectric cooling.



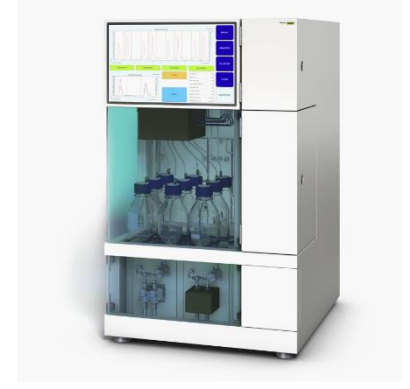
## Buchi Sepiatec SFC-250 Systems



The green standard for fast compound isolation  
Sepiatec SFC systems were designed for preparative separations by SFC chromatography and are extremely easy to use. They take less space than expected to satisfy any requirements, from basic to complex tasks, on a small or large scale.

Detection: UV; ELSD and MS (optional)

Pump: Prep SFC mode



## Buchi NIR-Online



All that is essential for process control.

Closely monitoring basic parameters such as moisture, fat or protein is crucial to correct deviations in manufacturing processes. The X-Sential™ has been developed and designed as the most cost-efficient, fit-for-purpose process sensor.



## SCHMIDT + HAENSCH iCS Process Concentration Sensor



VariPol is the newest and fastest generation of precision polarimetry. It is especially designed for pharmaceutical applications, but it can be adapted to further uses. Its unrivaled precision in measurement is paired with modularity, flexibility, and rapidity. State-of-the-art connectivity allows for seamless integration into your extended network of devices and permits monitoring your measuring results using Aquisys Software on phone or tablet.



## Mettler Toledo Thornton TOC Sensor 6000i Low PPB Transmitter M800 Water 2-CH EIP 21CFR



Real-time Total Organic Carbon Control.

The 6000TOCi online sensor delivers true continuous measurement for the detection of organic contamination. With an extremely rapid response to TOC changes, the 6000TOCi is ideal for all pure water applications where rapid detection of TOC changes is critical.

Multiparameter, ALCOA+ Data Integrity.

The M800 Water 2-CH 21CFR RecordLOC is a multi-parameter transmitter for monitoring TOC, ozone, and conductivity in water systems. It is compatible with RecordLOC software, which provides a unique solution for data integrity.



---

## Mettler Toledo Thornton TOC Portable 450TOC 110/240VAC



Easy TOC Measurement for Water Systems.

Using proven continuous measurement technology, the 450 TOC offers the fastest response available in a portable analyzer. Its convenient multi-point sampling ability makes the 450TOC a valuable tool for periodic sampling and water system diagnostics.

The 450TOC analyzer is designed for compliance: it meets the regulatory requirements for all major global pharmacopeias, including USP<643> EP2.2.44.



---

## Elga Veolia PURELAB® Chorus 1



Advanced PureSure Deionization Eliminates trace ions that leach into your water and provides advanced warning to change the purification packs.

Fully Recirculating Ensuring microbial purity and guaranteeing pure water at the point-of-use.

Real-time TOC Monitoring Provides complete confidence in organic purity.

Integrated Filtration Ultrafiltration or microfiltration filters out endotoxins, proteins, nucleases, and particulates.

Full Spectrum UV Treatment

Data Capture Data capture via USB for system performance validation and software updates.



---

## IKA HABITAT cell

### HABITAT cell dw 2

designed for scientists

The HABITAT cell control tower package is particularly suitable for HABITAT's cell culture applications and is used to monitor and control the bioprocess. It includes the control unit with all connection options for gas supply, liquid addition, sensors and temperature control as well as a tablet for easy and clear operation of the bioreactor.

HABITAT cell dw 2, the 2 l vessel package for the bioreactor HABITAT research contains a 2 l double-walled glass vessel for cell culture applications as well as the appropriate stirring drive.



---

## IKA ROTAVISC lo-vi Complete

designed for scientists

The ROTAVISC series determines the viscosity of liquids in all areas of application ranging from the laboratory to quality control. The four devices measure in different viscosity ranges. Regardless of a simple or demanding viscosity measurement - the ROTAVISC delivers rapid and accurate results.

The scope of delivery includes a standard spindle set (SP1-SP4), a protective bracket, temperature sensor and ROTASTAND stand.



---

## IKA LR 1000 basic System

---

**IKA**

designed for scientists

The LR 1000 basic is a cost efficient, modular laboratory reactor designed for optimizing chemical reaction processes as well as for mixing, dispersing and homogenization applications at the laboratory scale. The reactor is especially designed for the unique applications requirements that define the cosmetic and pharmaceutical industries.

The temperature of the medium can be as high as 120 °C. The temperature of the heating source, which is located at the bottom of the vessel, is controlled accordingly to reach the set temperature inside the medium. A PT 100.30 temperature sensor and the corresponding receptacle LR 1000.61 for the lid are included with this package.



---

## IKA TWISTER SET 4

---

**IKA**

designed for scientists

TWISTER is a universal and compact mixing device with magnetic drive. TWISTER SET 4 is multi-position magnetic stirrer with four drive units.

In the default version, TWISTER is a powerful single-position magnetic stirrer for mixing up to 5 liters at a maximum speed of 3000 rpm and a viscosity of up to 500 mPas.



---

## IKA KMO 3 basic

---

**IKA**

designed for scientists

The award-winning KMO 3 basic is a small but powerful magnetic stirrer without heating function. unique design with glass surface, brilliant, clear white display illuminated, flat stirring plate, key-lock button, reverse rotation integrated USB interface (control via labworldsoft and use of Firmware Update Tool), recessed thread for support rod protection class IP42



---

## IKA MICROSTAR 7.5 control

---

**IKA**

designed for scientists

The new MICROSTAR series by IKA: Developed using the latest cutting-edge technology, this high-tech overhead stirrer with its compact design is ideal for special applications.

Combining high performance with particular excellence, they require minimum space and come with a lifetime guarantee. See for yourself:

“The Lightweight” in the smallest high-tech class with low HP, but very fast nonetheless!



---

## IKA Tube Mill 100 control

---

### MT 40.100 Disposable grinding chamber

---

**IKA**

designed for scientists

The world's first patented Tube Mill 100 control is a batch mill with disposable grinding chambers. Eliminates possibility of cross-contamination and the effort of cleaning.

The disposable grinding chamber with a stainless steel beater reduces soft, medium, hard and brittle materials with a Mohs hardness of up to 5 (manganese or apatite: 5 Mohs).



## IKA Centrifuges G-L

**IKA**

designed for scientists

Separating substances at medium rotational speeds: IKA G-L is the ideal midi centrifuge for all types of separation processes such as those found in molecular biology. It can be used with standard 1.5/2 ml vessels, as well as with PCR strips. The cover opens automatically at the press of a button. Delivered with metal rotor set 12 x 1.5/2.0 ml.



## IKA VACSTAR control

**IKA**

designed for scientists

Separation, filtration, removal: The VACSTAR dry 4-chamber membrane vacuum pump is powerful, resistant to chemicals and low-maintenance. VACSTAR control is the ideal system with its integrated vacuum controller and removable display. The controller offers a suitable mode for the desired process: from automatic to manual operation, right through to pumping or an evacuation and cleaning function.



## Mettler Toledo ICS685 Compact Bench Scales

### PBD659 Hygienic Scale Platforms

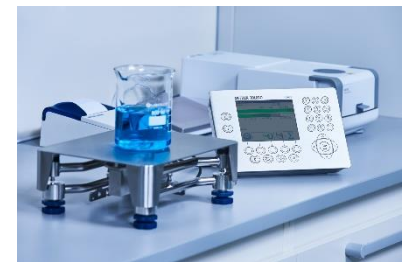
### Ticket Printer APR320



The accurate, modular and easy-to-use ICS6 scales thoughtfully combine convenience and reliability. The graphical LCD display with the basic colorWeight™ indicator shows operators at a glance whether results are in or out of specifications for high throughput with fewer errors.

Prevent cross-contamination

Cross-contamination in manufacturing impacts product quality and may even lead to product recalls. In many manufacturing industries, a range of regulations and industrial standards provide guidance to help ensure product safety and efficacy.



## Mettler Toledo Weighing Terminal IND570



The IND570 is an advanced industrial weighing indicator designed for a broad range of manual and automated weighing applications.

Controlled Integration Costs

Secure, Efficient Access to Data

Boost Weighing System Effectiveness



## Mettler Toledo IND930 Serie Form+ Formulation Systems Windows-based Terminal

### Form+ Formulation System



IND900 Series enables a wide range of uses especially for applications that must be customized.

Process Control, Connectivity and Process Protection.

Increase Process Control.

100% Connectivity & Visibility.

Formulation and Recipe Management System





---

## Mettler Toledo Safeline Profile Advantage Metal Detector

---



For challenging applications.

Safeline's most advanced food metal detector, which delivers up to 50 percent improved sensitivity when inspecting wet, hot, chilled, cooling, or metal film-packed products.

Maximum Sensitivity and Performance

Multi Simultaneous Frequency & Product Signal Suppression technology deliver exceptional sensitivity and virtually eliminate false rejects

Simple to Use and Improves OEE

Easy to use icon driven touchscreen with intuitive product clustering allows single setting operation to drive productivity and increase OEE.

Maximum Uptime

Condition Monitoring and automatic balance control combine to deliver a long-term stable operating platform to increase performance and improve uptime.



---

## Mettler Toledo Garvens C35 Advanced Line Checkweigher

---



High performance checkweighing.

High performance checkweigher suitable for challenging weighing applications. Advanced FlashCell™ EMFR technology delivers maximum accuracy at throughputs up to 800ppm. The modular design offers customization to effectively handle any package type.

Performance Excellence

This system offers the flexibility to support all product sizes and weighing challenges with maximum precision at fast throughputs.

Product Handling Excellence

Achieve maximum process stability and equipment efficiency through transition, transport, stability and sorting options for any packaging format.

Software and Control Excellence

Exceptional process optimization with a wide range of standard and customizable, sophisticated software enhancements and control options.

